



Blumenbecker Prag s. r. o.

CZ – 108 03 Praha 10 • Počernická 96

Tel. (+420) 296 411 610 • Fax (+420) 296 411 620

[www.blumenbecker.cz](http://www.blumenbecker.cz) • E-Mail: [info@blumenbecker.cz](mailto:info@blumenbecker.cz)

# Package sorter

## Reference



## Description

**Project** Package sorter in Logistic Center

**Investor** ROSSMANN Logistik GmbH

**Site** Landsberg, Germany

**Year** 2003

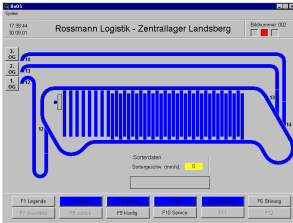
**Delivery scope** *Software and commissioning*

## Specification



**Control system**

§ **Siemens SIMATIC S7-400**  
(with 52 x Siemens ET200B remote I/O)



### HMI

- § 3 x PC with BeOS
- § Visualization coded in Visual Basic and C++
- § Coded terminal Teklogix
- § Label printer and Barcode Scanner Datalogic

### Communication

- § PROFIBUS-DP links control system, regulated drives and remote I/O
- § Serial interface RS422 with Barcode Scanner
- § Ethernet with main computer



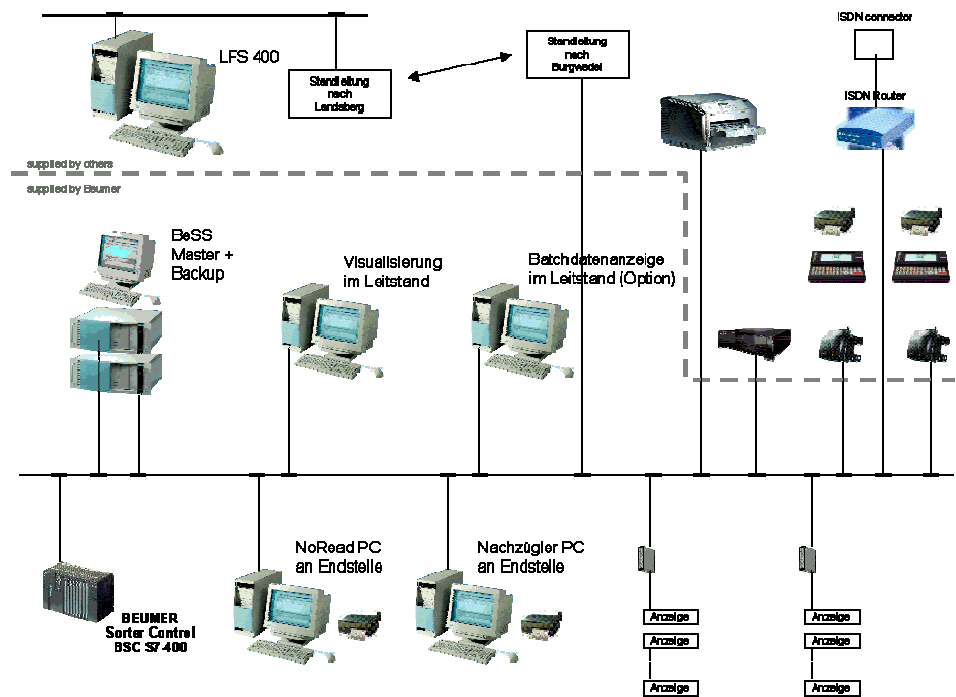
### Drives

- § 18 x SEW Movimot for feeding belts
- § 4 x Linear drive SEW Movitrac for Sorter – everyone with draft from 400N



### Technology

- § Parcel Sorter in Logistic center
- § Sorter Length: 147 m
- § Sorter speed: 2,0 m/s
- § Plate capacity: 12 000 plates/h
- § Feeding belts: 3 pieces
- § End points: 30 pieces



Schema